

Mary Ward Hall

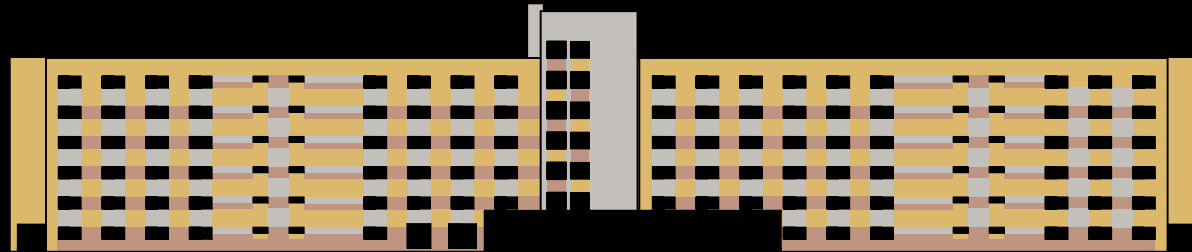
Marc Daja Elbasani

Project Type:
Professional

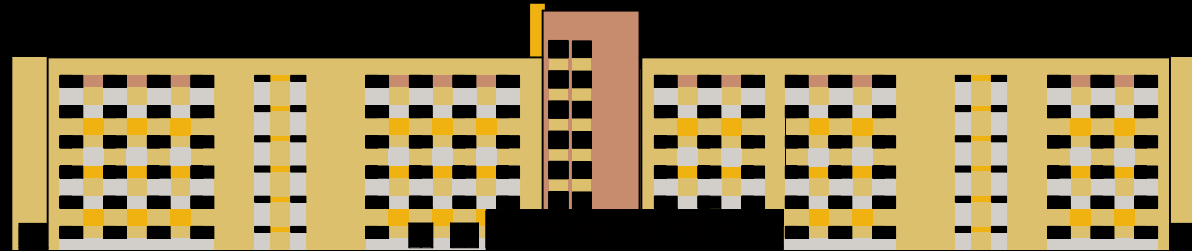
Office:
ELS Architects

Supervisor:
Avery Taylor Moore

Mary Ward Hall is a dormitory at San Francisco State University. The building's original facade featured a vertical "cascade" pattern in bland shades of pink and beige.



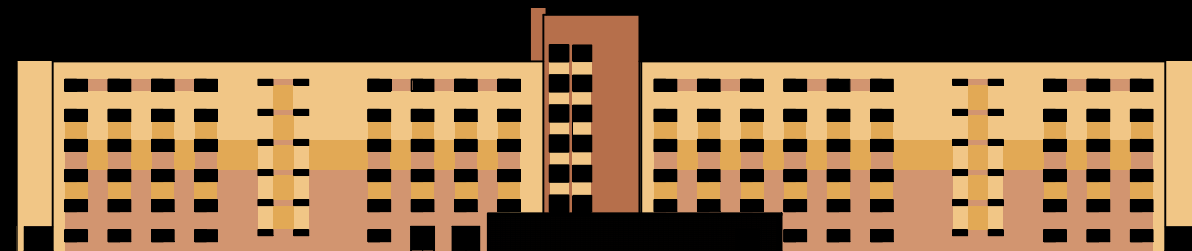
The first proposal for a new painting scheme offered an elaborate horizontal pattern informed by the yellow, orange, and brown colors of the newly built local urban fabric.



The pattern was soon revised, to reduce cost and the possibility of painter errors in the field, resulting in a more checkered presentation.



An entirely different approach was inspired by the blocked colors of the original central tower, which resulted in the distribution of the three main colors across the entire elevation.



The client later indicated a fondness for the vertical dynamics of the original scheme, so the final pattern revisited the original in a careful selection of more contemporary earth tones.

